



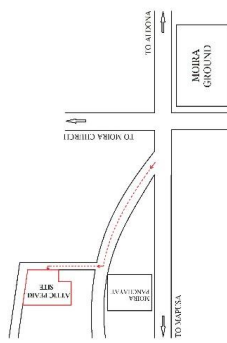
# **ATTIC PEARL**

## **RESIDENTIAL COMPLEX**

NEAR MOIRA PANCHAYAT, MOIRA, BARDEZ - GOA

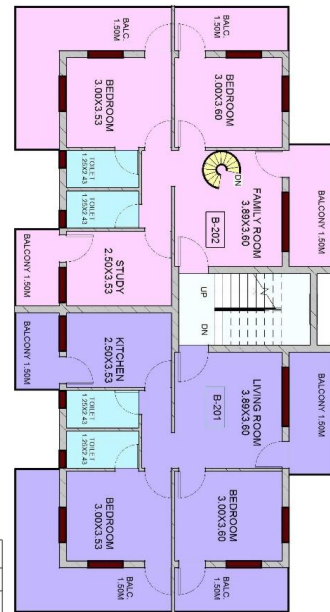


- 3 kms from Mapusa City.
  - Landscaped surroundings
  - Close to Bus Stop, Market, Shopping Market.
  - Near to School \ Colleges
- Architect: S. Dhuri**  
**Structural Engineer: Amit Malik**



LOCATION PLAN

FLAT NO.	BI.U. AREA
B-201	97.12 SQ.M.
B-202	97.12 SQ.M.



FIRST FLOOR PLAN (BLOCK B)

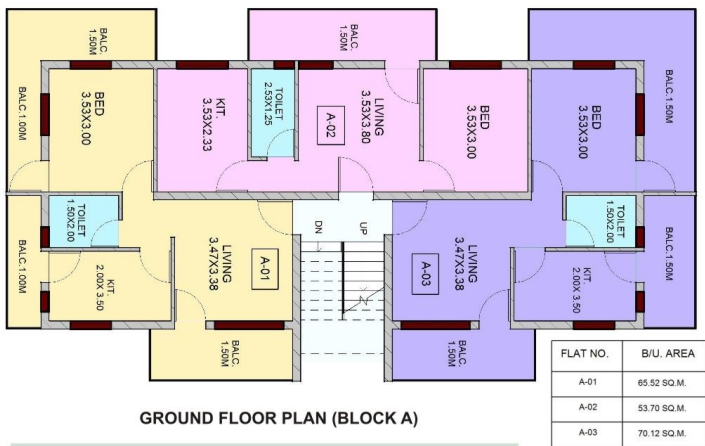
**DISCLAIMER**

Images used are only illustrative. Maps, Plans - not to scale. The Developer reserves the right to make any changes to the drawings/specifications shown in the brochure.



**THE ATTIC CONSTRUCTIONS  
(INDIA) PVT. LTD.**

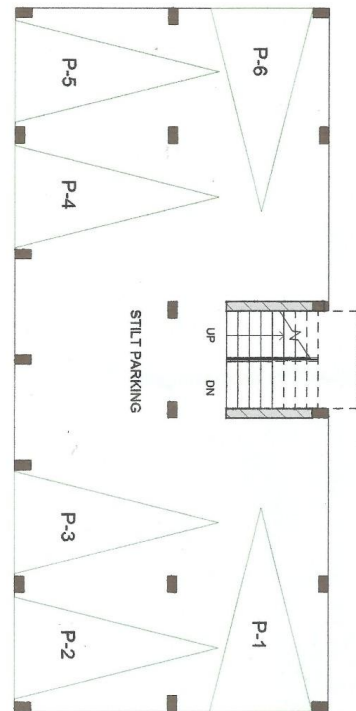
Reg. Off.: Alfran House, Near Cine Alankar, Next to Mayur Punjab Restaurant, Mapusa, Bardez - Goa, India 403 507  
Tel.: 0832-2253439 / 2257931 E-mail: attic\_construction@live.com Website: www.attic-construction.in



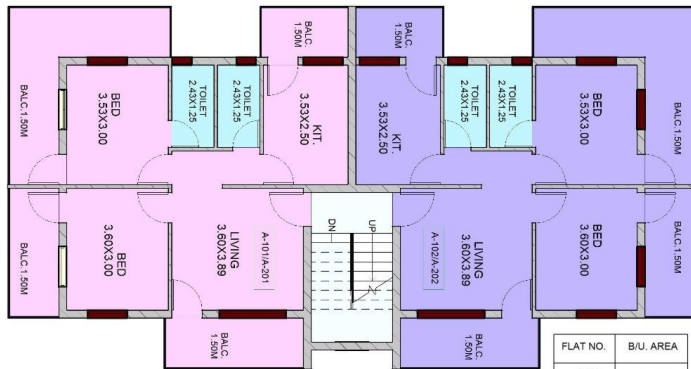
GROUND FLOOR PLAN (BLOCK A)

**OUR ASSURANCE**

- Solid structure of lasting Beauty.
- Timely project completion with quick possession.
- Close monitoring of the entire project by well experienced engineers, consultants and architects.
- RCC framed structure
- Superior finish



STILT FLOOR PLAN (BLDG./BLOCK 'B')

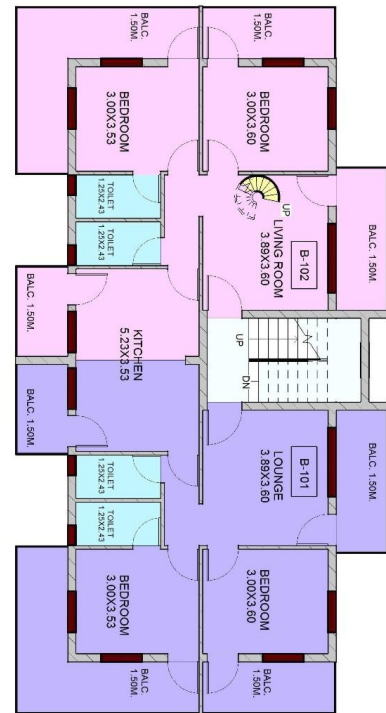


TYPICAL 1ST & 2ND FLOOR PLAN (BLOCK A)

FLAT NO.	B/U. AREA
A-101	96.97 M <sup>2</sup>
A-102	96.97 M <sup>2</sup>
A-201	96.97 M <sup>2</sup>
A-202	96.97 M <sup>2</sup>

**SPECIFICATIONS**

- Vitrified flooring.
- Ample car parking space / stilt parking.
- Inverter wiring for each flat.
- Interiors with oil bound distemper / Exterior weather protective paint.
- Granite kitchen top, stainless steel sinks
- Antiskid tiles flooring and full height tiles in bathrooms.
- A/C provisions for bedrooms.
- Main door of teakwood, remaining doors will be of flush doors / hardwood doors and hardwood frame.
- Powder coated aluminum sliding windows.



UPPER GROUND FLOOR PLAN (BLOCK B)

FLAT NO.	B/U. AREA
B-101	96.97 SQ.M.
B-102	96.97 SQ.M.